

- Freeways**
- Existing
  - Needs Improvement
  - Recommended
- Expressways**
- Existing
  - Needs Improvement
  - Recommended
- Boulevards**
- Existing
  - Needs Improvement
  - Recommended

- Other Major Thoroughfares**
- Existing
  - Needs Improvement
  - Recommended
- Minor Thoroughfares**
- Existing
  - Needs Improvement
  - Recommended
- Interchanges and Grade Separations**
- Existing Interchange
  - Proposed Interchange
  - Interchange Needs Improvement
  - Existing Grade Separation
  - Proposed Grade Separation

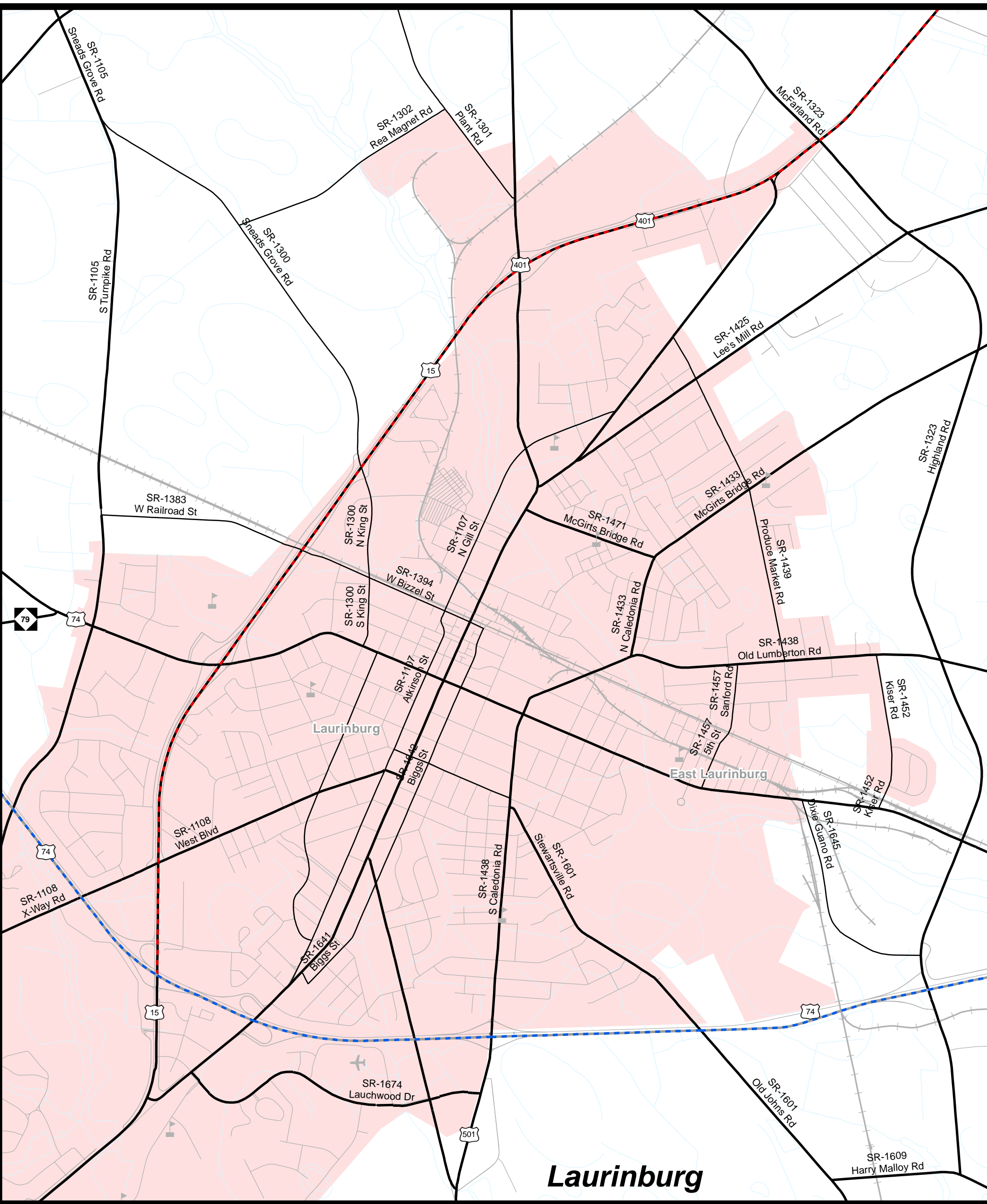


Sheet 2 of 5

Base map date: January 3, 2014  
 Refer to CTP document for more details

**Highway Map**

**Scotland County**  
**Working Map**  
**Comprehensive**  
**Transportation Plan**  
 Plan date: February 14, 2014



<p><b>Freeways</b></p> <ul style="list-style-type: none"> <li> Existing</li> <li> Needs Improvement</li> <li> Recommended</li> </ul> <p><b>Expressways</b></p> <ul style="list-style-type: none"> <li> Existing</li> <li> Needs Improvement</li> <li> Recommended</li> </ul> <p><b>Boulevards</b></p> <ul style="list-style-type: none"> <li> Existing</li> <li> Needs Improvement</li> <li> Recommended</li> </ul>	<p><b>Other Major Thoroughfares</b></p> <ul style="list-style-type: none"> <li> Existing</li> <li> Needs Improvement</li> <li> Recommended</li> </ul> <p><b>Minor Thoroughfares</b></p> <ul style="list-style-type: none"> <li> Existing</li> <li> Needs Improvement</li> <li> Recommended</li> </ul> <p><b>Interchanges</b></p> <ul style="list-style-type: none"> <li> Existing Interchange</li> <li> Proposed Interchange</li> <li> Interchange Needs Improvement</li> </ul> <p><b>Grade Separations</b></p> <ul style="list-style-type: none"> <li> Existing Grade Separation</li> <li> Proposed Grade Separation</li> </ul>
---	--

Sheet 2 of 5

Base map date: January 3, 2014

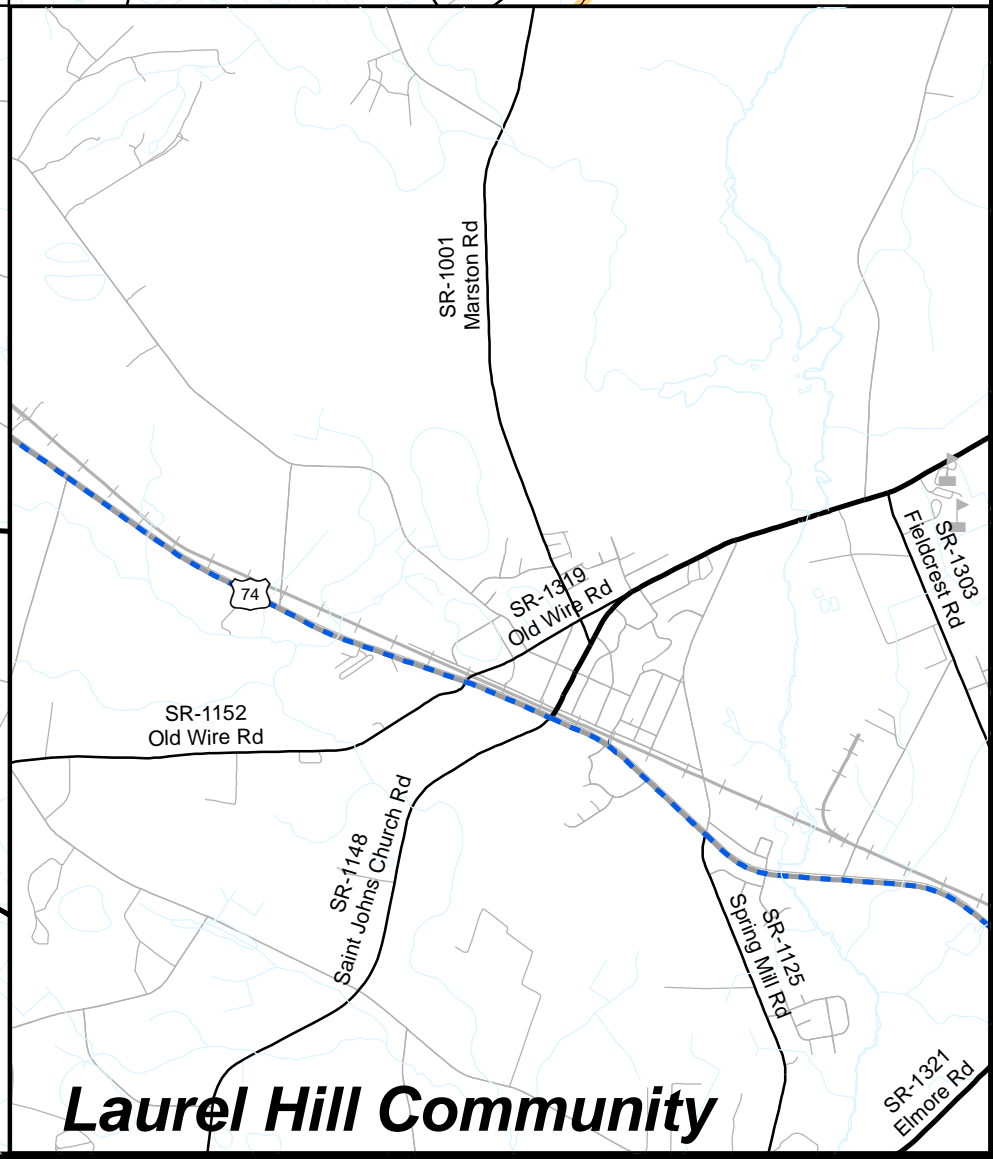
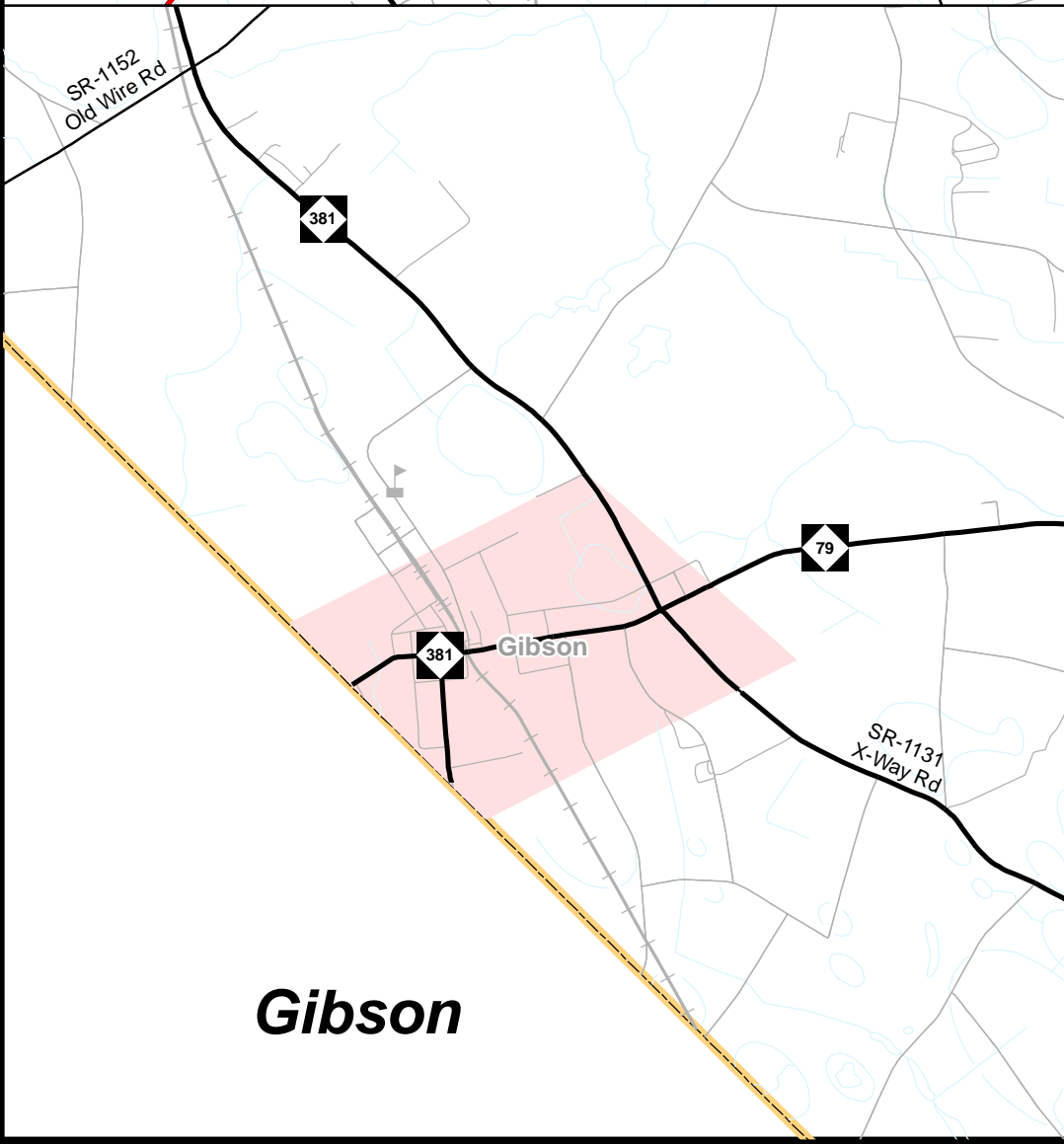
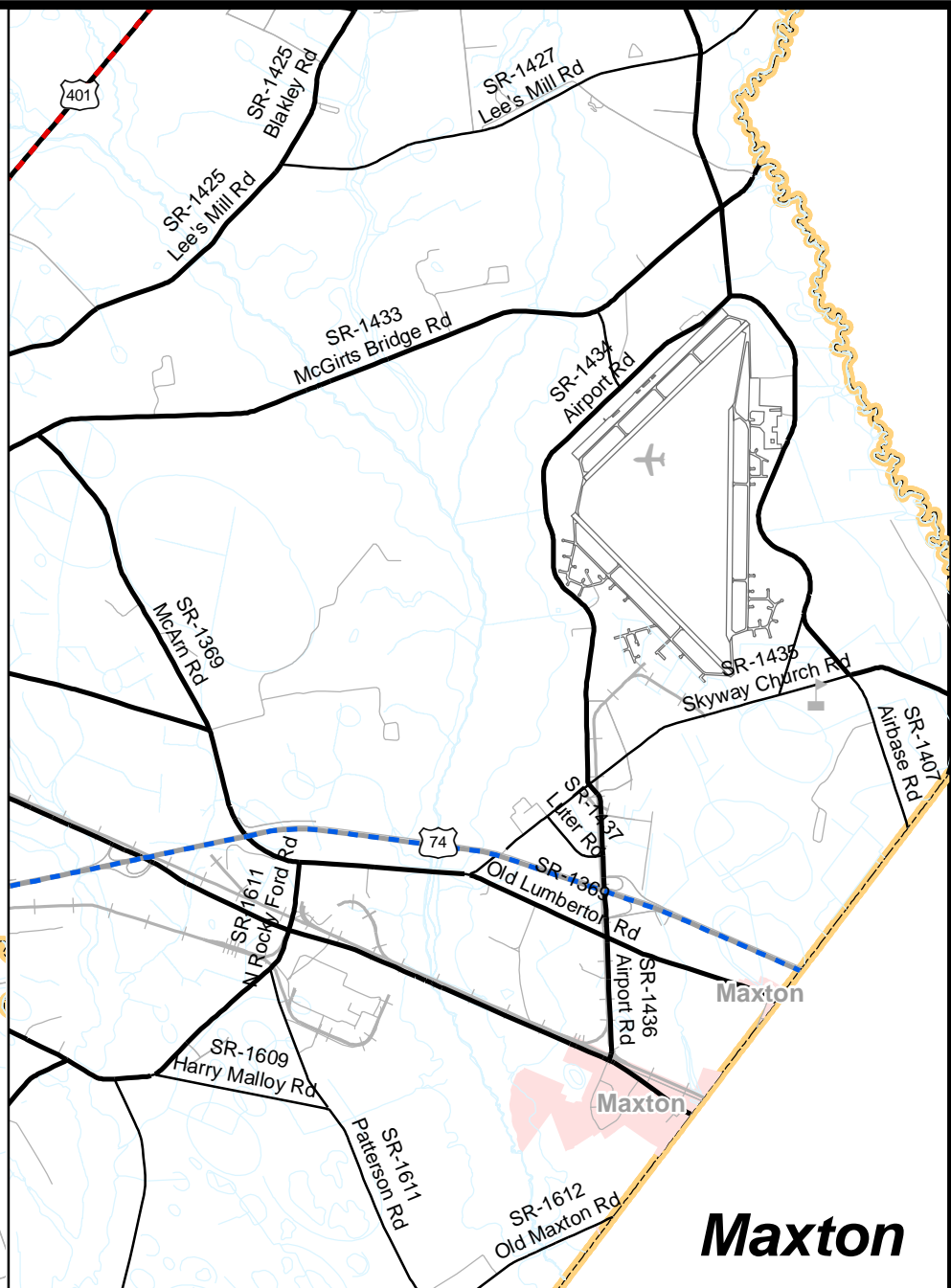
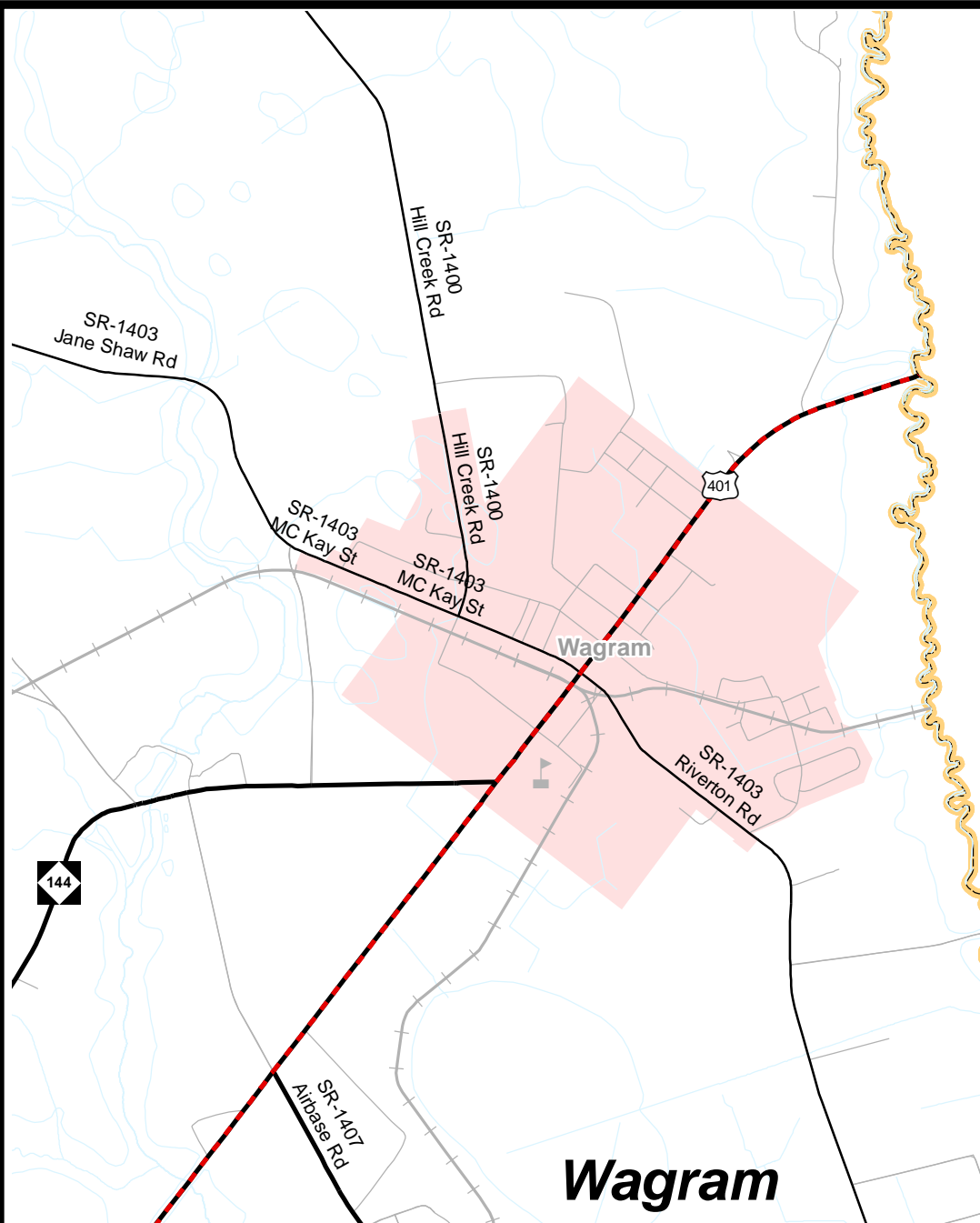
Refer to CTP document for more details

**Highway Map**

**Scotland County**  
**Working Map**  
**Comprehensive**  
**Transportation Plan**

Plan date: February 14, 2014





<p><b>Freeways</b></p> <ul style="list-style-type: none"> <li> Existing</li> <li> Needs Improvement</li> <li> Recommended</li> </ul> <p><b>Expressways</b></p> <ul style="list-style-type: none"> <li> Existing</li> <li> Needs Improvement</li> <li> Recommended</li> </ul> <p><b>Boulevards</b></p> <ul style="list-style-type: none"> <li> Existing</li> <li> Needs Improvement</li> <li> Recommended</li> </ul>	<p><b>Other Major Thoroughfares</b></p> <ul style="list-style-type: none"> <li> Existing</li> <li> Needs Improvement</li> <li> Recommended</li> </ul> <p><b>Minor Thoroughfares</b></p> <ul style="list-style-type: none"> <li> Existing</li> <li> Needs Improvement</li> <li> Recommended</li> </ul> <p><b>Interchanges</b></p> <ul style="list-style-type: none"> <li> Existing Interchange</li> <li> Proposed Interchange</li> <li> Interchange Needs Improvement</li> <li> Existing Grade Separation</li> <li> Proposed Grade Separation</li> </ul>
---	---

Scale: 0 0.125 0.25 0.5 0.75 Miles

Sheet 2 of 5

Base map date: January 3, 2014

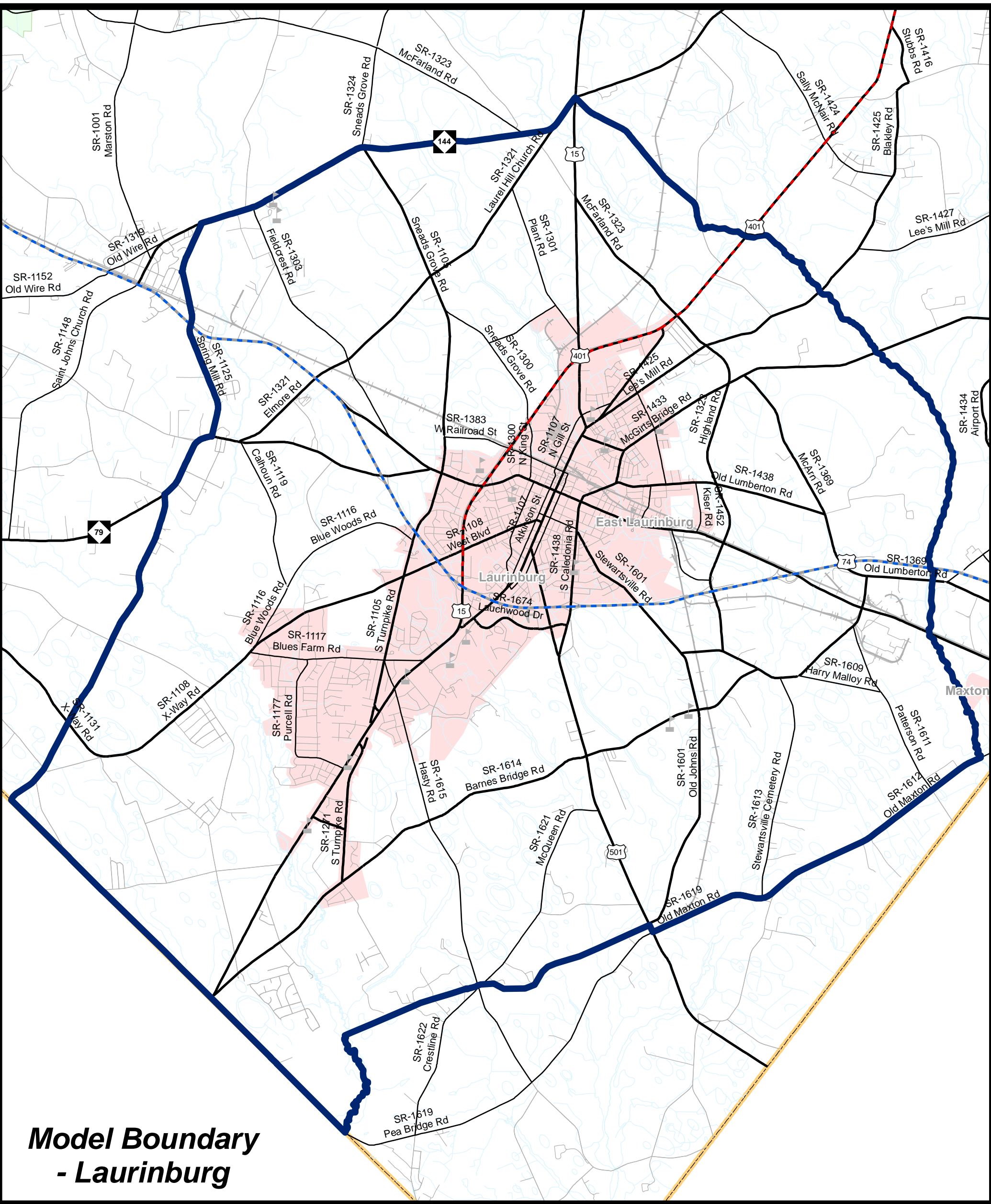
Refer to CTP document for more details

**Highway Map**

**Scotland County**  
**Working Map**  
**Comprehensive**  
**Transportation Plan**

Plan date: February 14, 2014





**Model Boundary  
- Laurinburg**

<p><b>Freeways</b></p> <ul style="list-style-type: none"> <li> Existing</li> <li> Needs Improvement</li> <li> Recommended</li> </ul> <p><b>Expressways</b></p> <ul style="list-style-type: none"> <li> Existing</li> <li> Needs Improvement</li> <li> Recommended</li> </ul> <p><b>Boulevards</b></p> <ul style="list-style-type: none"> <li> Existing</li> <li> Needs Improvement</li> <li> Recommended</li> </ul>	<p><b>Other Major Thoroughfares</b></p> <ul style="list-style-type: none"> <li> Existing</li> <li> Needs Improvement</li> <li> Recommended</li> </ul> <p><b>Minor Thoroughfares</b></p> <ul style="list-style-type: none"> <li> Existing</li> <li> Needs Improvement</li> <li> Recommended</li> </ul> <p><b>Interchanges</b></p> <ul style="list-style-type: none"> <li> Existing Interchange</li> <li> Proposed Interchange</li> <li> Interchange Needs Improvement</li> </ul> <p><b>Grade Separations</b></p> <ul style="list-style-type: none"> <li> Existing Grade Separation</li> <li> Proposed Grade Separation</li> </ul>
---	--

**Highway Map**

0 0.3 0.6 1.2 1.8 Miles

Sheet 2 of 5

Base map date: January 3, 2014

Refer to CTP document for more details

**Scotland County  
Working Map  
Comprehensive  
Transportation Plan**

Plan date: February 14, 2014